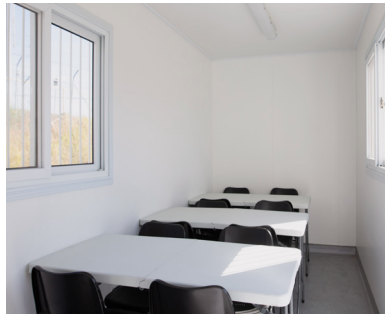


20FT LUNCH ROOM

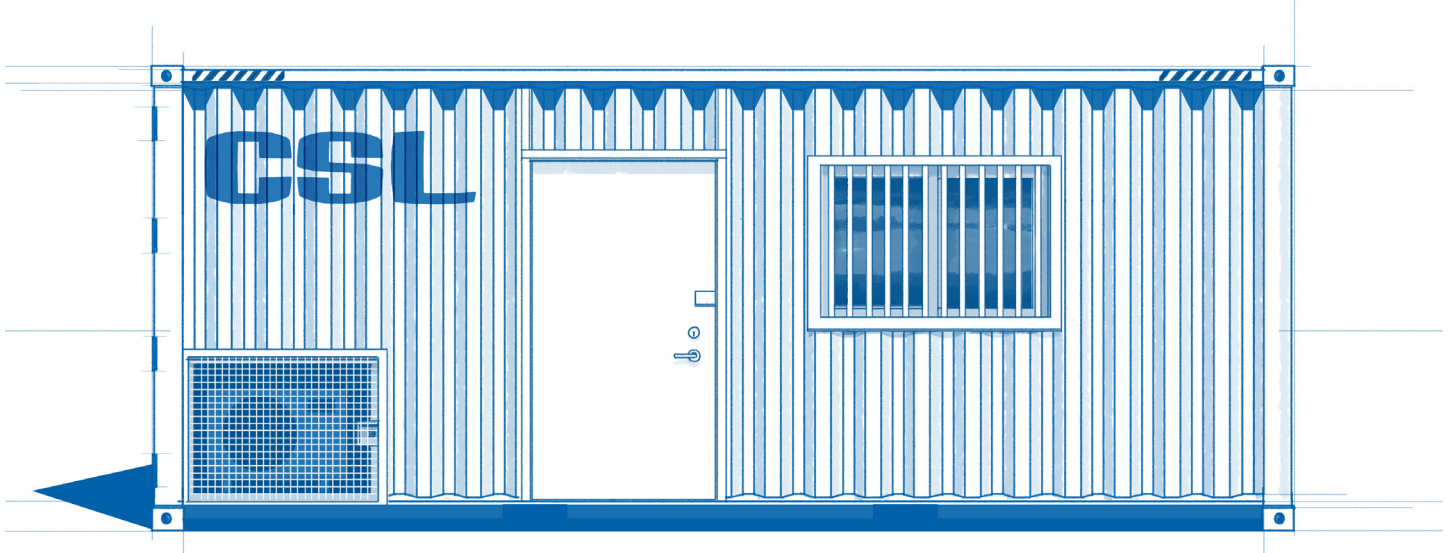


Fill up a cuppa, heat up a pie, and put up your feet, with the CSL 20ft Lunch Room. This portable building comes rigged up with a hot water boiler, stainless steel bench, split system air conditioner, power and lighting.

Rough 20ft Lunch Room Container Dimensions

6.1m L x 2.5m W x 2.9m H

20FT LUNCH ROOM



Portable Building features

- Hot water boiler
- Stainless steel bench
- Lighting and power.

Safe and secure

- Lock-up-and-leave lockbox system
- Steel security shutters that open with gas struts
- Secure place to keep loose appliances overnight.

Built to handle the Kiwi climate

- Made from weathering carbon steel
- Pest and vermin-proof
- Watertight and wind-resistant.

Cleverly customisable

- Introduce handy appliances like a microwave or fridge
- Add windows, doors, or paint the exterior
- Dial up the comfort with air-conditioning, seating, and more.

Why Choose a 20ft Lunch Room?

Every workplace needs a safe, warm, and weather-proof place to take a break -and the CSL 20ft Lunch Room is just that. It's a dedicated space for your team to get off their feet and enjoy a bite to eat. Because a well-rested and well-fed team leads to a job well done.

Look after your team's wellbeing with the **20ft Lunch Room**.

20ft Shipping Container for hire

Reasons to hire?

- You get access to the newest units in the CSL fleet
- You can return the Lunchroom once you are finished with it
- With 31-day minimum terms, it makes a great short-term solution.